

## Collection 2023

### Sandön

Islands are places of yearning: landscapes surrounded by the sea that take on a special character which touches and fascinates us. Like Gotska Sandön – Gotland's both striking and charming sandy isle whose landscape and vegetation served as an inspiration for our 2023 collection. Far away from the nearest mainland this Swedish island comprising of little but sand and pebbles in the Baltic Sea has been formed by the weather and tides for millennia. The unique light of the North brings about lines and structures that when translated into textiles inject the lightness and joie de vivre of a summer's day at the sea into interiors.

### Feels like sun, wind & waves

Sensory impressions as featherweight souvenirs. With their look and touch the fabrics in the Sandön collection bring back pleasant memories of their natural role models. Wool bouclé **"Olea"** and the sand-like grain of **"Klas"** invite us to touch just as does the high-low texture of **"Tropea"**. The constant roll of the waves and rippling dunes find their counterparts in the dynamic patterns of **"Keno"** and **"Liko CS"** while **"Savo"** echoes the graduated shades of the seashore. With **"Monti"** and **"Alon"** our thoughts shift to the island's interior with its mossy grounds and delicately blooming flowers. The impact of those Nordic lights so highly praised by painters runs through the entire collection. The comprehensive colour scheme comprising sand, sea and mineral tones in our single-coloured fabrics **"Stella CS"**, **"Aalto"** and **"Selma"** is complemented by floral accents. **"Jorma"** and **"Kari"** in pure linen round off the line with a fresh twist on checks and stripes.

### Close to nature and high impact

Sandön as a 2023 collection sharpens the profile of nya nordiska who are known for offering timeless textile design for people that appreciate quality and love nature. Accordingly, sustainability and resource conservation are just as relevant to us as our creative claim. The use of natural fibres like linen, wool, cotton or hemp is supplemented by a targeted deployment of recycled materials. Together they create the textile basis for rooms to take a deep breath and feel pleasantly grounded. Like after a stroll along the beach at Gotska Sandön.

## 1. Keno

approx. 137 cm

5 colours

65% cotton, 25% polyester,  
10% polyamid



Like crashing waves. Stones washed by the sea serve as an inspiration for **Keno**'s abstract pattern. This warp printed woven with a bouclé yarn charmingly toys with the contrast between matt, white surface textures and a coloured, softly shiny background. The latter presents one of five subdued sand and sea colours in various intensities, as produced by the refraction of water. The yarn grain provides this double-faced furnishing fabric with its delicate look and feel reminiscent of fine sand, which looks particularly striking when backlit.



01 natural



02 grey



03 brass



04 blue



05 salvia

# nya nordiska



## 2. Selma

approx. 300 cm

8 colours

50% hemp, 25% acrylic,  
20% wool, 5% viscose

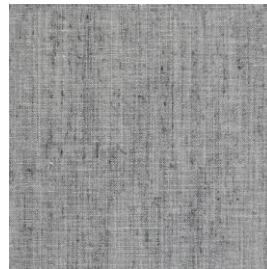
Plain to “sea“. The yarn used for **Selma** boasts a multicolour effect that gives the fabric its lively appearance. Eight mineral tones come in varying nuances reminding us of shell or stone surfaces depending on the hue. Naturalness that is also reflected in the fibre mix combining hemp with wool and viscose. As an attractive alternative to linen Selma scores additional points with its pleasant touch and loose drape.



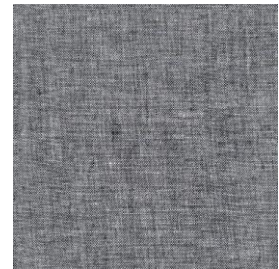
01 granite



02 oak



03 silver



04 graphite



05 mustard



06 navy



07 siena



08 anthrazite

# nya nordiska



## 3. Tropea

approx. 140 cm

6 colours

100% polypropylen

Martindale 25,000 rubs



A textile companion through all the tides. Curves as if painted by the wind in the sand unfold in soft high and low textures. With these **Tropea** flatters both eyes and fingertips alike. An upholstery fabric suitable for both outdoor and indoor use that sets itself apart with high light-fast and easy-care properties. The bouclé pattern stands out against the pale background in six colours, featuring strong contrasts for outdoor and soft graduated shades for indoor applications.



21 sand



22 slate



23 hazel



24 natural



25 graphite



26 black

# nya nordiska



## 4. Stella CS

approx. 320 cm

28 colours

100% polyester (Trevira CS recycled)

From sunrise to sunset. With 28 solid colours the elegant taffeta **Stella CS** comprises all the colour combinations a day by the sea can offer. These range from the featherweight non colours of dawn and the intense tones of noon through to sunset reds as well as the soft twilight scale. Be it in residential or contract settings, as a textile soloist or attractive companion, this opulent solid fabric in recycled Trevira CS yarn is suitable for universal use.



# nya nordiska



## 5. Jorma

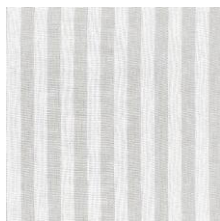
approx. 325 cm

16 colours

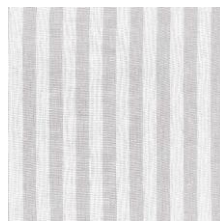
100% linen (pre-washed)



The fabric summers are made of. **Jorma** is a variation on not one but two of nya nordiska's core competencies but with a refreshingly topical twist: naturalness and stripes. This light furnishing fabric in pure mill-washed linen projects a relaxed casual look with 1 cm wide maritime stripes and 16 colours that also makes coordinating a sheer delight. Tuned to the two bestsellers solid **Jonte** and block stripes **Jona** in terms of material and colour scheme, it extends the summery linen range to include a third, no-frills option.



41 flint



42 smoke



43 natural



44 sand



45 terra



46 orange



47 yellow



48 sky



49 blush



50 berry



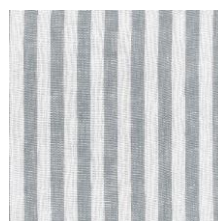
51 ginger



52 salvia



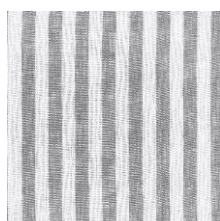
53 blue



54 grey



55 cappuccino



56 oak

# nya nordiska



## 6. Aalto

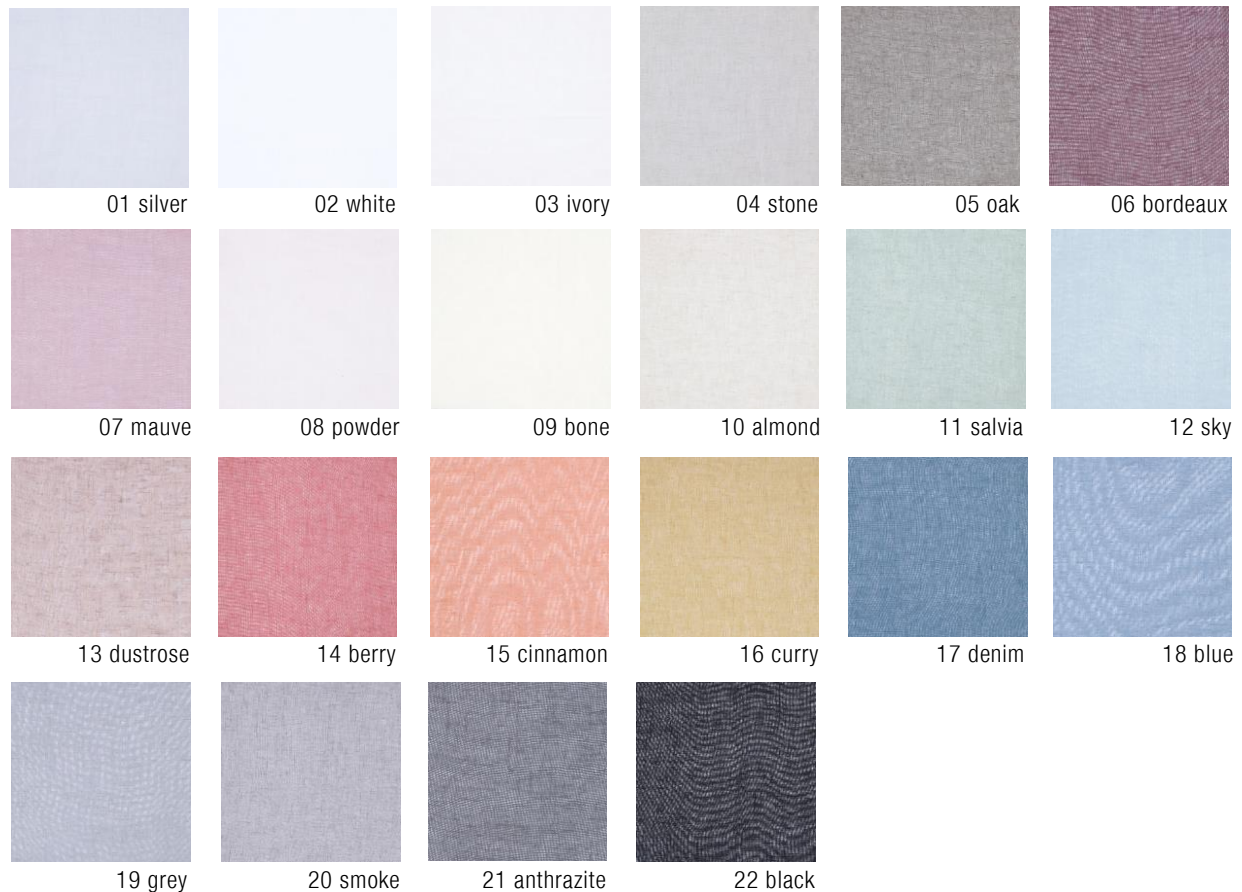
approx. 315 cm

22 colours

80% polyester, 20% linen



The lightness of being. **Aalto** has captured 22 tones of the natural scale and woven them into a single-coloured furnishing fabric oozing with airiness and semi-transparency. Its broad spectrum comprises all island colours from tree, stone and sand hues through to blossom and berry tones, not forgetting the blue nuances of sky and sea all the way down to fog grey and night black. The linen admixture in its easy-care fibre mix makes for the dry touch and feel of this natural material which is combined with a soft, creaseless drape optimised by an integrated lead band.



# nya nordiska



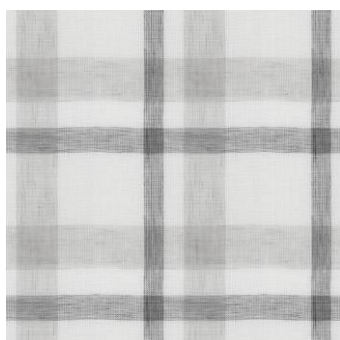
## 7. Kari

approx. 150 cm

6 colours

100% linen

Motion & emotion. Owing to their irregular placement **Kari**'s woven checks always stay in motion. This modern twist on nya nordiska's core »check« theme is underlined still further by strong colour versions. The semi-transparent linen fabric transposes the summery island colours into discreet mineral combinations as well as radiant, flowery check variants. Choosing your personal favourite is purely a matter of taste.



21 silver



22 sand



23 sun



24 azur



25 powder



26 lavender

# nya nordiska



## 8. Olea

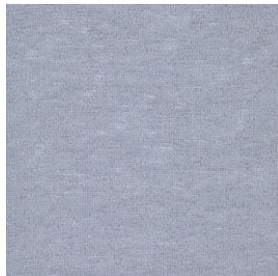
approx. 290 cm

7 colours

50% wool, 25% polyester,  
25% polyamid



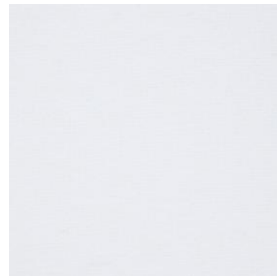
Like sand on the sea. The semi-transparent gauze **Olea** is irresistible to the touch. Its soft wool bouclé yarn arouses associations with the finest powdery sand running through your fingers. A sensual experience that also becomes visible thanks to the irregular grain unfolding in delicate vertical lines. Each one of the seven natural tones ranging from stone to sand to sea blue exudes its very own mood in interiors. What they all have in common: the properties of the wool bouclé make for a pleasant indoor climate.



01 silver



02 graphite



03 ivory



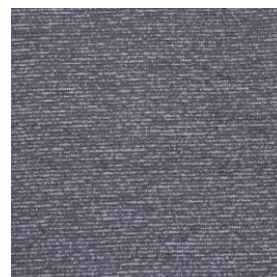
04 oak



05 blue



06 marine



07 anthrazite



## 9. Savo

approx. 320 cm

8 colours

65% linen, 35% wool

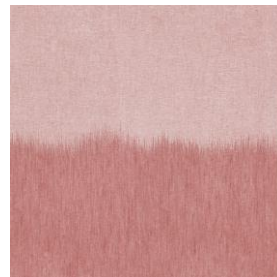
Ebb and (colour) flow. **Savo's** Ikat look is reminiscent of the traces the tide leaves on the beach as it goes out. The lighter part of the two-tone fabric represents the dry sand here, while the colour graduations appear as if intensified by water. A transition that corresponds to the material changeover from pale linen to coloured wool. The two deliberately clash in the middle of the 320 cm wide double-face fabric allowing decorators to individually decide on how high the "tide" in eight soft shades can rise.



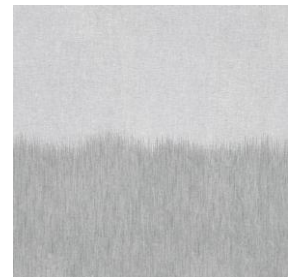
21 sand



22 hazel



23 red



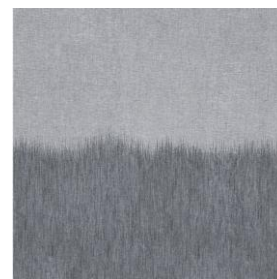
24 silver



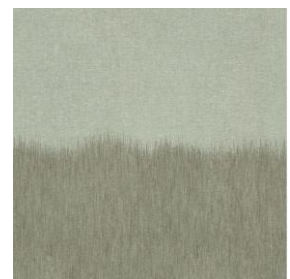
25 navy



26 mustard



27 graphite



28 olive



## 10. Monti

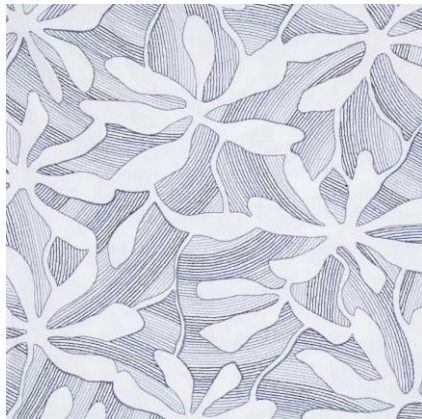
approx. 130 cm

4 colours

40% cotton, 30% linen,  
25% viscose, 5% polyester



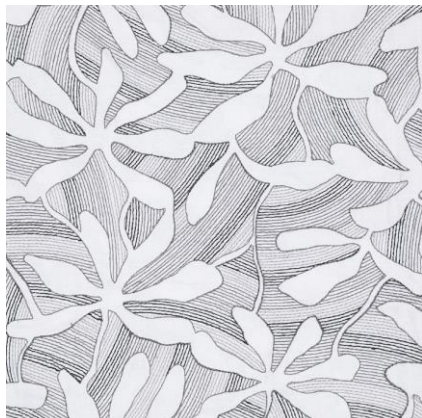
Blossoming island fantasies. Delicate plant silhouettes creep across furnishing fabric **Monti** and are highlighted by the embroidered hatching that surrounds them. In addition to finely varied stitching in blue, sand or graphite nuances on a pale cotton-linen background there is also a version with white embroidery on an anthracite background. A 2 cm overlap ensures the floral embroidery can blossom without limits indoors.



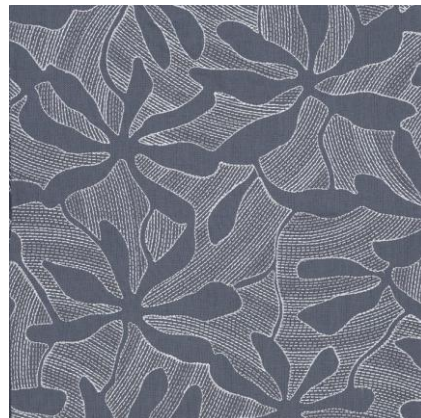
01 blue



02 natural



03 graphite



04 slate



## 11. Klas

approx. 140 cm  
Martindale 70,000 rubs

25 colours

30% cotton, 25% wool, 20% acrylic,  
15% polyester, 10% silk

Decorative sandstorm. **Klas**' multi-coloured yarn breathes life into this upholstery fabric with a speckled semi plain that looks like drifting sand. A wide colour palette comprising 25 shades stages the charming grain in many different ways. Discreet tone-on-tone versions feature as well as a vividly contrasting confetti of colours. Unalloyed joy is also ensured in all colour nuances thanks to the high wear resistance of this upholstery "allrounder" with its 70,000 Martindale rubs.



01 greyishblue



02 grey



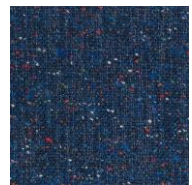
03 slate



04 graphite



05 navy



06 marine



07 sky



08 smoke



09 oak



10 sand



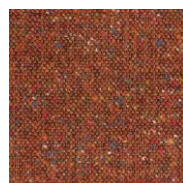
11 hazel



12 chocolate



13 peach



14 cinnamon



15 rust



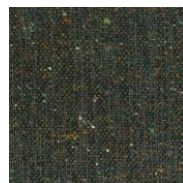
16 bordeaux



17 walnut



18 terra



19 hunter



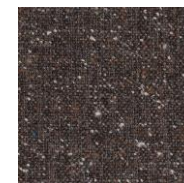
20 salvia



21 stone



22 basalt



23 mocca



24 black



25 lavender

**nya nordiska**



## 12. Liko CS

approx. 142 cm

6 colours

100% polyester (Trevira CS)



For rooms with a view. Semi-transparent stripes in **Liko CS**’ jacquard pattern produce a smart window-blind effect where the floral “vistas” appear as if filtered by a filigree grid. The blossoms interspersed with this “window-blind hatching” in light brushstrokes look as if blown by the wind. Depending on which face of the fabric is used these either stand out pale against a darker background or dark against a lighter one. The versatile colour scale of this double-face furnishing fabric fit for contract interiors ranges from sheer natural tones to dark ink blue and black.



01 silver



02 natural



03 siena



04 olive



05 navy



06 black

# nya nordiska



## 13. Alon

approx. 140 cm  
Martindale 60,000 rubs

8 colours

70% polyester, 15% cotton,  
10% viscose, 5% linen

Rooted in nature. Like a soft, springy forest floor covered in fallen leaves upholstery fabric **Alon** creates a relaxed atmosphere that automatically triggers a sigh of relief. Its relief foliage designed in piqué technology gives the all-over fabric a natural, lively touch exuding exclusivity both in visual and tactile terms. 60,000 Martindale rubs ensure robust everyday suitability. Supplied in eight natural tones it brings the warmth of a summer's day by the seaside into interiors – while making a soft to distinct statement depending on its colour intensity.



01 bone



02 flax



03 siena



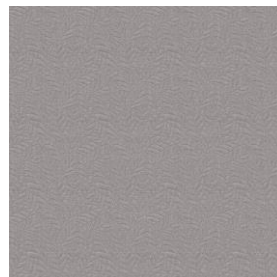
04 marine



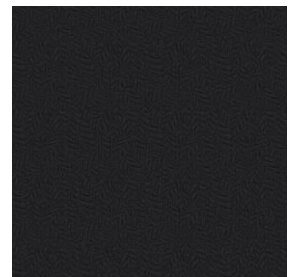
05 sky



06 olive



07 silver



08 anthrazite

**nya nordiska**

